

Local Market Update – June 2011

A RESEARCH TOOL PROVIDED BY THE INDIANA ASSOCIATION OF REALTORS®



- 19.9%

Change in
New Listings

- 9.1%

Change in
Closed Sales

- 2.8%

Change in
Median Sales Price

Marion County

	June			Year to Date		
	2010	2011	+ / -	2010	2011	+ / -
New Listings	1,978	1,584	- 19.9%	11,875	9,528	- 19.8%
Closed Sales	1,092	993	- 9.1%	5,385	4,397	- 18.3%
Median Sales Price	\$102,900	\$100,000	- 2.8%	\$100,000	\$94,000	- 6.0%
Percent of Original List Price Received at Sale*	91.7%	88.3%	- 3.7%	91.1%	88.3%	- 3.0%
Months Supply of Inventory	8.6	10.7	+ 23.8%	--	--	--
Inventory of Homes for Sale	8,076	7,545	- 6.6%	--	--	--

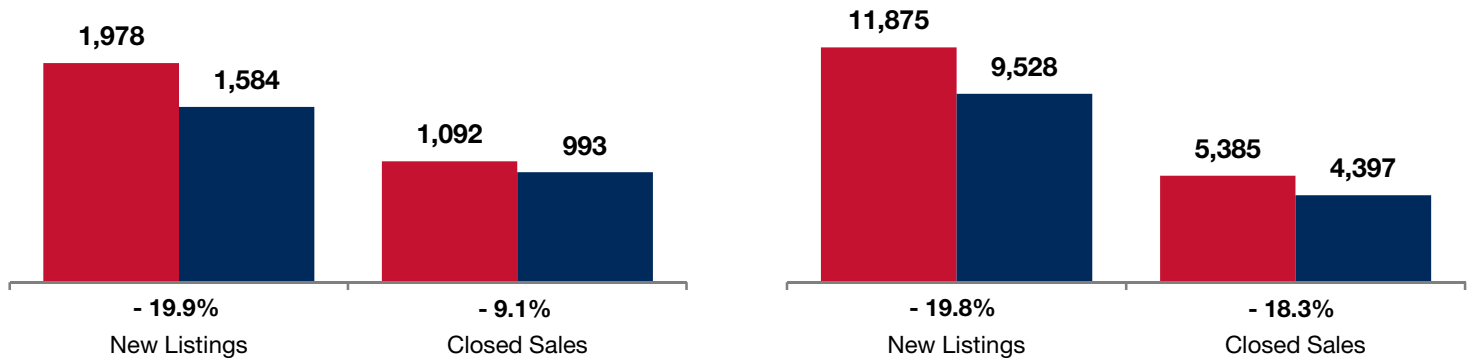
* Does not account for list price from any previous listing contracts. | Activity for one month can sometimes look extreme due to small sample size.

June

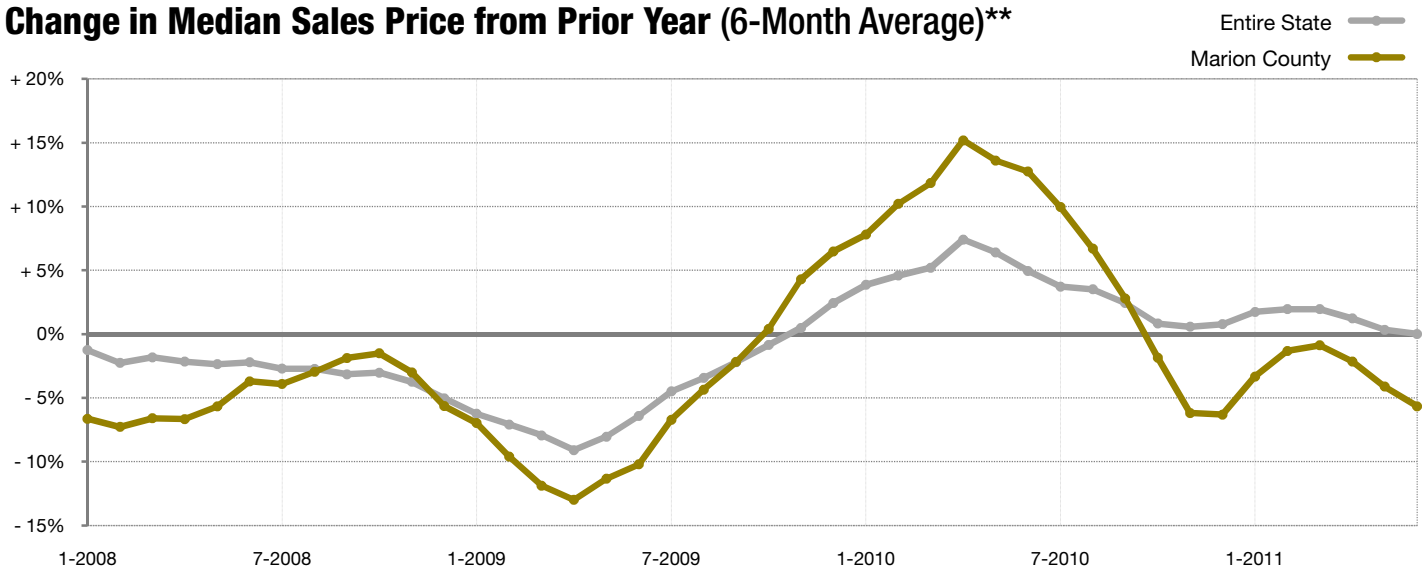
■ 2010 ■ 2011

Year to Date

■ 2010 ■ 2011



Change in Median Sales Price from Prior Year (6-Month Average)**



** Each dot represents the change in median sales price from the prior year using a 6-month weighted average. This means that each of the 6 months used in a dot are proportioned according to their share of sales during that period. | Data obtained from the Broker Listing Cooperative® (BLC®). Provided by the Metropolitan Indianapolis Board of REALTORS® and Multiple Listing Service. | Powered by 10K Research and Marketing.